



VACUUM TECHNOLOGY - III

Magic Gripper



KOREA (ASIA)

VMECA Co., Ltd.
24, Beonkkot-ro 10-gil
Geumcheon-gu Seoul 08606 Korea
Tel: +82-2-2617-5008 (Rep.)
Fax: +82-2-2617-5009
http://www.vmecca.com
e-mail: vmecca@vmecca.com

VMECA (Thailand) Co. Ltd.

VMECA (Thailand) Co. Ltd.
99/349 Na Nakorn Building Floor 1st,
Chaengwattana Rd., Thung Song Hong,
Laksi, Bangkok, Thailand
Tel: +66-2-982-0700
Fax: +66-2-982-0799
Web: www.vmecca.com
e-mail: inquiry@vmecca.com

VMECA (Thailand) Co. Ltd.

VmeUSA Inc.
1305 San Gabriel Blvd., Suite 203
Rosemead, CA 91770
Tel: +1-213-258-7114 (Rep.)
Fax: +1-626-569-9978
Web: /www.vmecca.com
e-mail: infousa@vmecca.com

GERMANY (EUROPE)

VMECA GmbH
Gutenberg Strasse 20
D-70794 Filderstadt, Germany
Phone: +49-711-4408-3260
Fax: +49-711-4408-3261
Web: www.vmecca.com
e-mail: vtec@vmecca.com

- Argentina • Australia • Austria • Belgium • Brazil • Canada • China • Colombia • Czech
- Denmark • Egypt • France • Germany • Hungary • India • Indonesia • Iran • Israel • Italy
- Japan • Lebanon • Malaysia • Mexico • Netherlands • New Zealand • Norway • Philippines • Poland
- Spain • Sweden • Switzerland • Taiwan • Thailand • Turkey • UK • Vietnam

The world best in Vacuum



**Specializing in
Vacuum products since 1991**

VMECA headquarter / R&D center



VMECA Co., Ltd.

08606, 24 Beotkkot-ro
Geumcheon-gu, Seoul
Korea

Phone: +82-2-2617-5008

Fax: +82-2-2617-5009

Email: info@vmecca.com

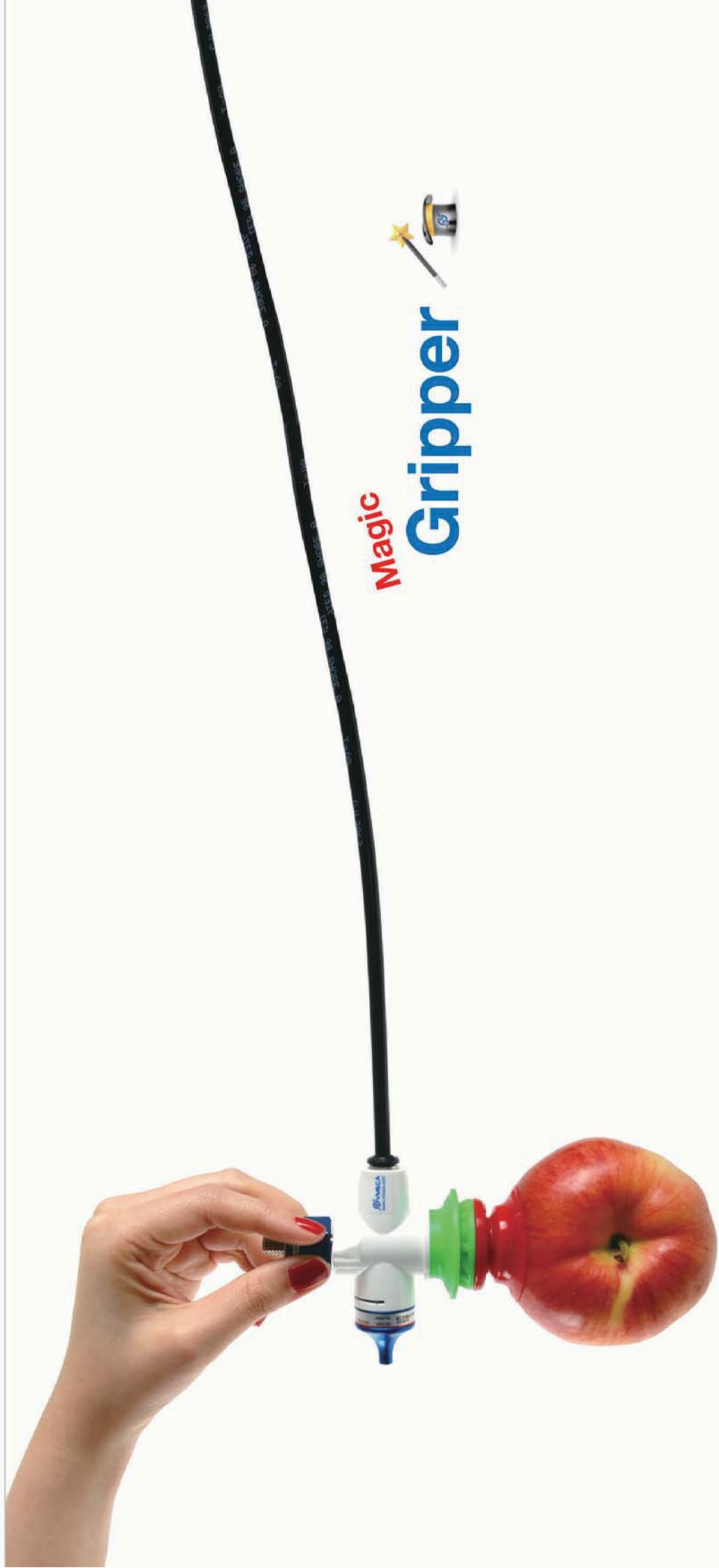
www.vmecca.com



VACUUM PUMPS Magic Grippers



EASY!!!

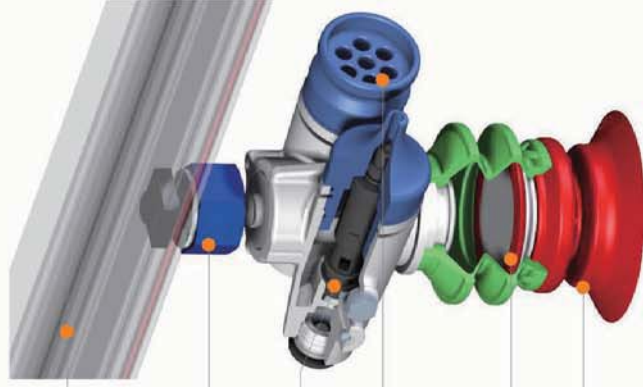


Magic
Gripper



What is Magic Gripper

Patent & Patent pending



- Profile
- +
- Mounting bracket
- +
- Vacuum generator (VMECA vacuum cartridge system)
- +
- Auto vacuum release valve
- +
- Vacuum filter
- +
- Suction cup

All in Magic Gripper



- Conventional system**
- ✓ High cost for installation and process
 - ✓ Need of many pipe lines and connectors
 - ✓ High energy consumption
 - ✓ Difficult installation and complicated structure
 - ✓ Difficult to select suitable model without vacuum knowledge
 - ✓ Not available for individual vacuum system

Features

- ✓ Saving cost for system
- ✓ Easy to build vacuum system
- ✓ Various suction lips for different application
- ✓ Fast response & Excellent performance
- ✓ Individual vacuum system
- ✓ 73% less energy consumption
- ✓ Flexible profile options – Easy mounting
- ✓ Various model options for selection according to flow rate
- ✓ VMECA multi stage vacuum cartridge pump integrated





Magic Gripper

Excellent Gripping system

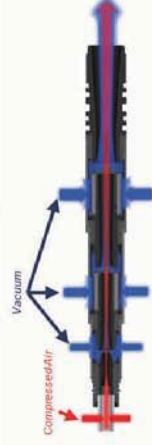
Features

- ✓ Easy to build vacuum system
- ✓ Saving cost for system
- ✓ Fast response & Excellent performance
- ✓ Quick release without release control valve
- ✓ Flexible profile options – Easy mounting
- ✓ Individual vacuum system
- ✓ Various model options for selection according to flow rate
- ✓ VMECA multi stage vacuum cartridge pump integrated

Mount options

No mount	M	P

Vacuum generator (VMECA vacuum cartridge technology)



Top bellows options

B1.5/20	B1.5/40	B1.5/60	B2.5/20	B2.5/40	B2.5/60

Stopper options

A	B	C	D

Vacuum filter

F

Various Suction lips

X lip	U lip	P lip	F lip	MBL lip	MBU lip	MD lip	SF lip	MU / MF lip	Stopper Suction lip
P.110	P.114	P.118	P.122	P.126	P.130	P.134	P.138	P.142	P.146

VACUUM PUMPS

Magic Grippers



Integrated with Innovative VMECA Vacuum cartridge systems

- ✓ Low energy consumption
- ✓ Excellent performance
 - High vacuum flow and vacuum level
- ✓ Stable performance despite fluctuation or drop of compressed air pressure
- ✓ Easy installation
- ✓ Long life time



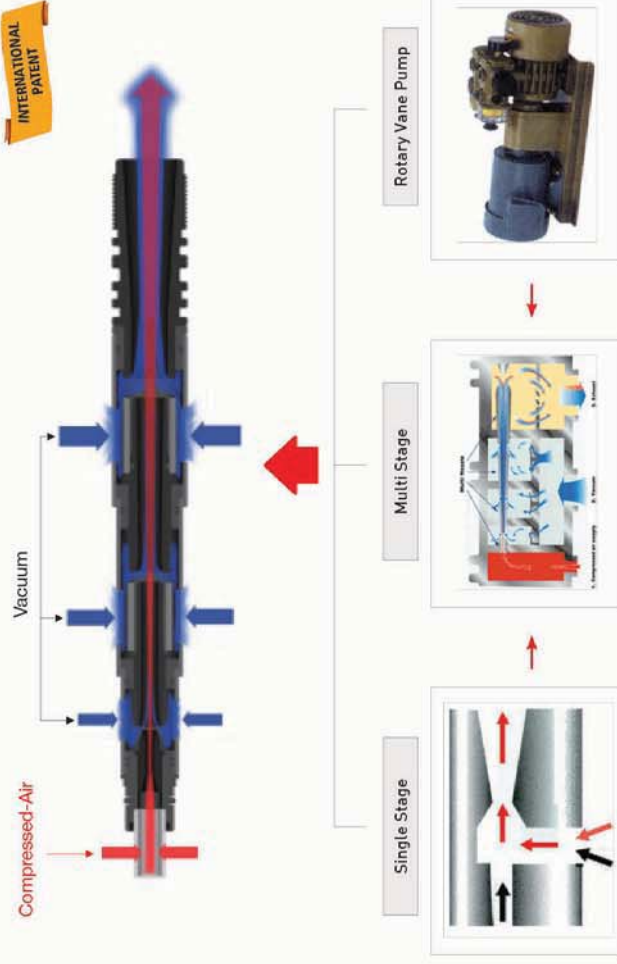
Compact and Light weight

70% more energy saving &

Less weight **40% Lighter**



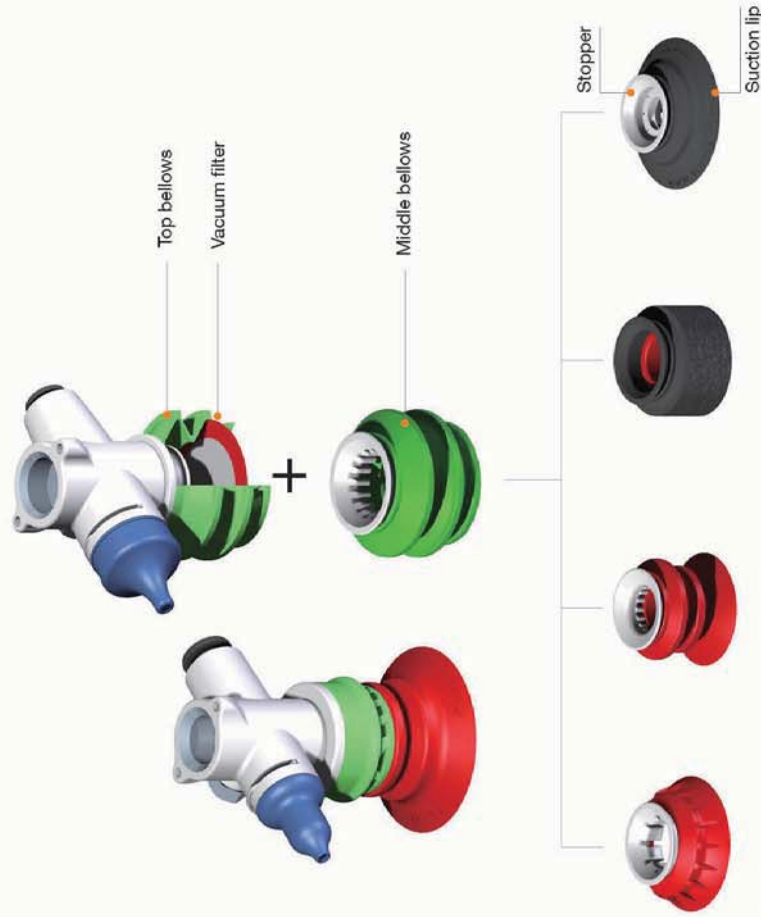
**73% less energy consumption &
Vacuum flow 3times higher**





Combination with **Magic suction cups**

- ✓ Excellent performance in various industry with wide range of lips
- ✓ Modular suction cup (Configurable structure)
- ✓ Various combination for different application
- ✓ Replacement suction lips only (Cost saving)
- ✓ Easy to assemble & disassemble



* Suction lip is required on page 110 ~ 149.

Application



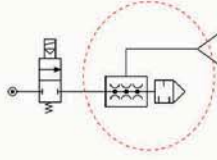


Standard options – 4 Types

1. Single Vacuum Cartridge – “A type”



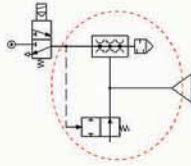
Single cartridge capacity



2. Automatic vacuum release with single vacuum cartridge – “B type”



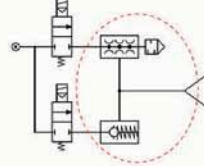
Auto vacuum release function integrated
(No need of vacuum release control valve)



3. Check valve with single vacuum cartridge – “C type”



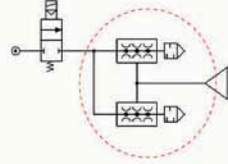
Check valve integrated at vacuum
release port for fast evacuation time
* Control valve for vacuum release is required.



4. Dual Vacuum Cartridge – “D type”



Dual cartridges for double capacity



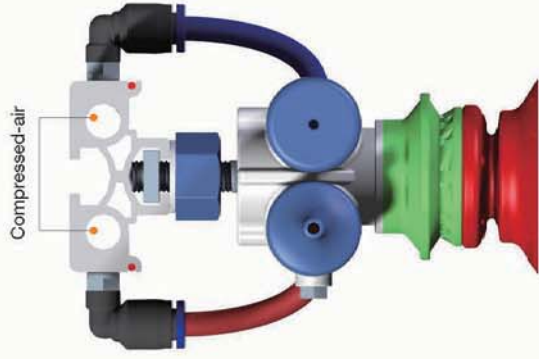
Pump Characteristics

Product view	Type	Model	Supply Air Pressure (bar)	Max. Vacuum (-kPa)	Max. Vacuum Flow (NI/m)	Air Consumption (NI/m)	Required page
	A	MC10A	1.1	48	9.2	5.9	P. 22
			1.8	83	12.3	8.7	
			2.2	81	14	9.9	
	A	MC20A	2.2	63	36.8	21	P. 30
			3.3	92	40.5	27	
			4.0	91	42.2	32	
	A	MC25A	4.5	88.2	71.3	75	P. 38
			5.2	95.2	73.8	85	
			6.0	94.6	77.8	96	
	B	MC10B	1.1	48	9.2	5.9	P. 46
			1.8	83	12.3	8.7	
			2.2	81	14	9.9	
	C	MC10C	1.1	48	9.2	5.9	P. 54
			1.8	83	12.3	8.7	
			2.2	81	14	9.9	
	D	MC10D	1.1	48	16.4	11.3	P. 62
			1.8	83	20.2	16.4	
			2.2	81	23.0	20.3	
	B	MC20B	2.2	63	36.8	21	P. 70
			3.3	92	40.5	27	
			4.0	91	42.2	32	
	C	MC20C	2.2	63	36.8	21	P. 78
			3.3	92	40.5	27	
			4.0	91	42.2	32	
	D	MC20D	2.2	63	66.2	40	P. 86
			3.3	92	74	55	
			4.0	91	75.7	56	
	B	MC25B	4.5	88.2	71.3	75	P. 94
			5.2	95.2	73.8	85	
			6.0	94.6	77.8	96	
	C	MC25C	4.5	88.2	71.3	75	P. 102
			5.2	95.2	73.8	85	
			6	94.6	77.8	96	



MOUNTING options

Profile Mount

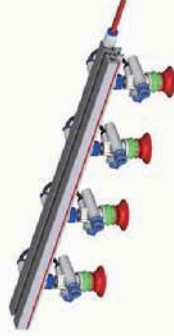


Application

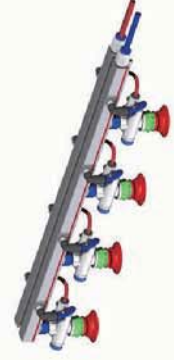
- Compressed air (Vacuum on)
- Vacuum release (Vacuum off)



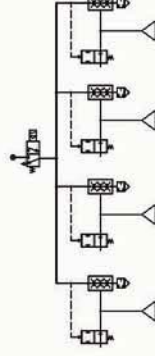
B type on profile



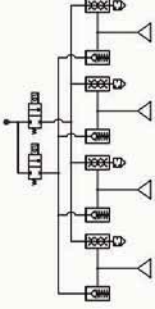
C type on profile



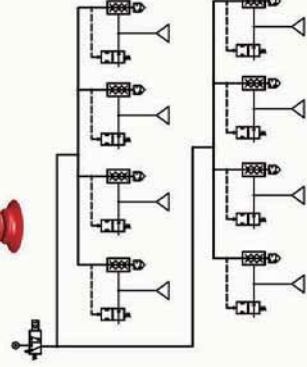
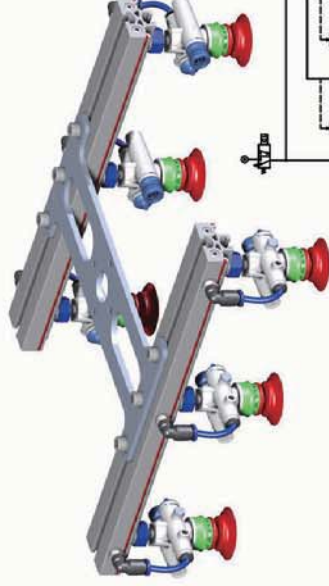
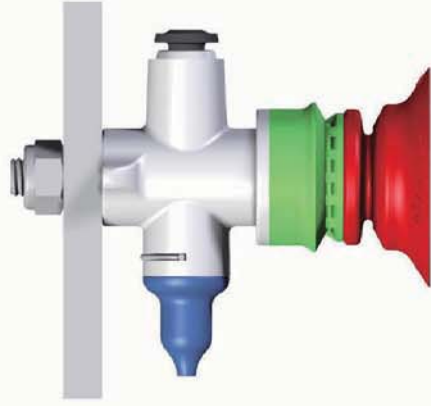
Auto vacuum release function integrated
* No need of vacuum release control valve



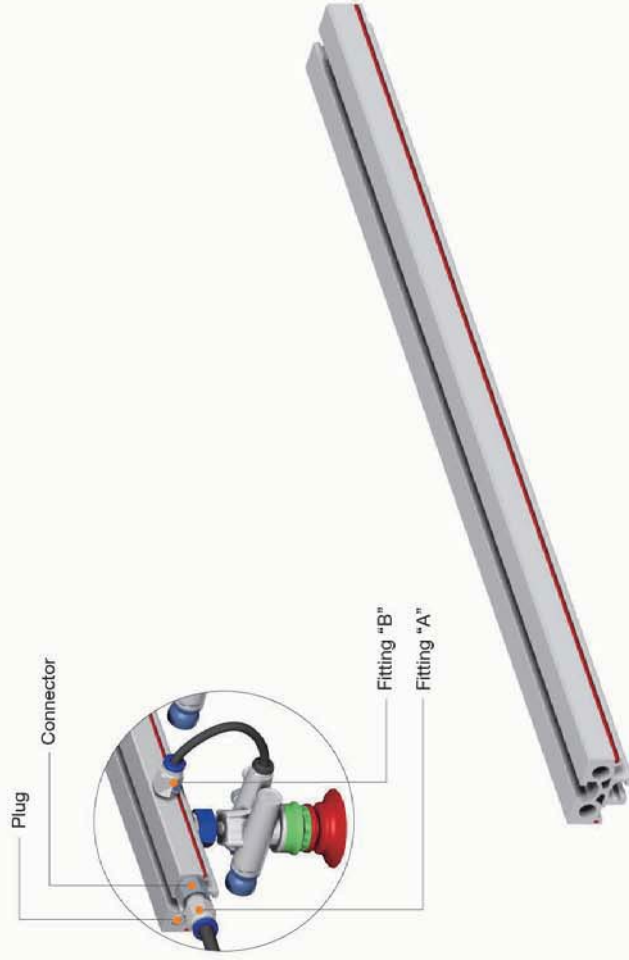
Check valve integrated at vacuum release port for fast evacuation time
* Control valve for vacuum release is required.



Direct Mount



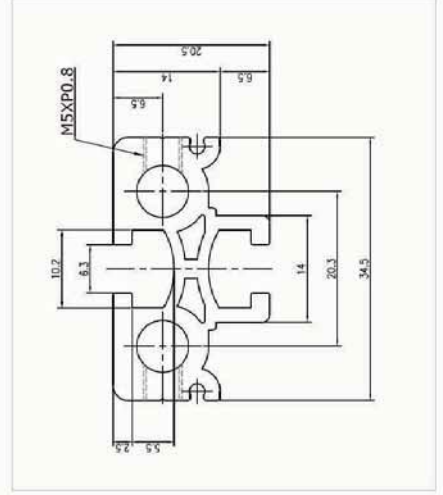
Profile – T06 series



Profile

Model	Description
T06 – 500	Profile length 0.5m
T06 – 1000	Profile length 1m
T06 – 1500	Profile length 1.5m
T06 – 2000	Profile length 2.0m

* Specific length of profile is required to contact VMECA.



Dimensional Data

Connector

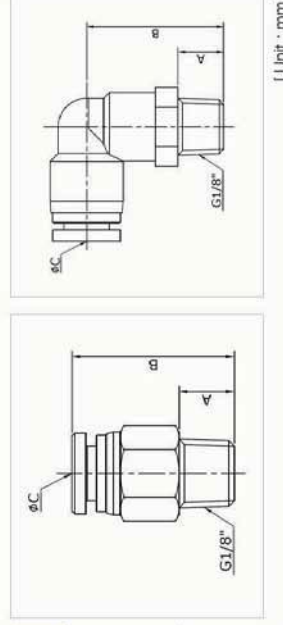
Product view	Model	Description
	CF18	Connector for T06 profile

Plug

Product view	Model	Description
	HL8	Plug for profile

Fitting "A"

Product view	Model	Description
	FI1806	G1/8 thread, 60 one touch fitting
	FI1808	G1/8 thread, 80 one touch fitting

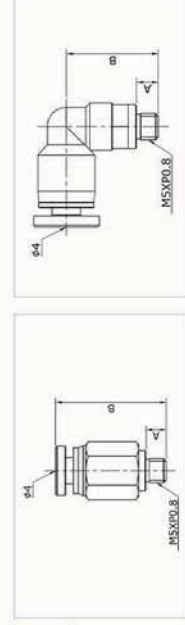


[Unit : mm]

Model	A	B	C
FI1806	8	23.2	6
FI1808	8	28.5	8
FL1806	8	24	6
FL1808	8	27	8

Fitting "B"

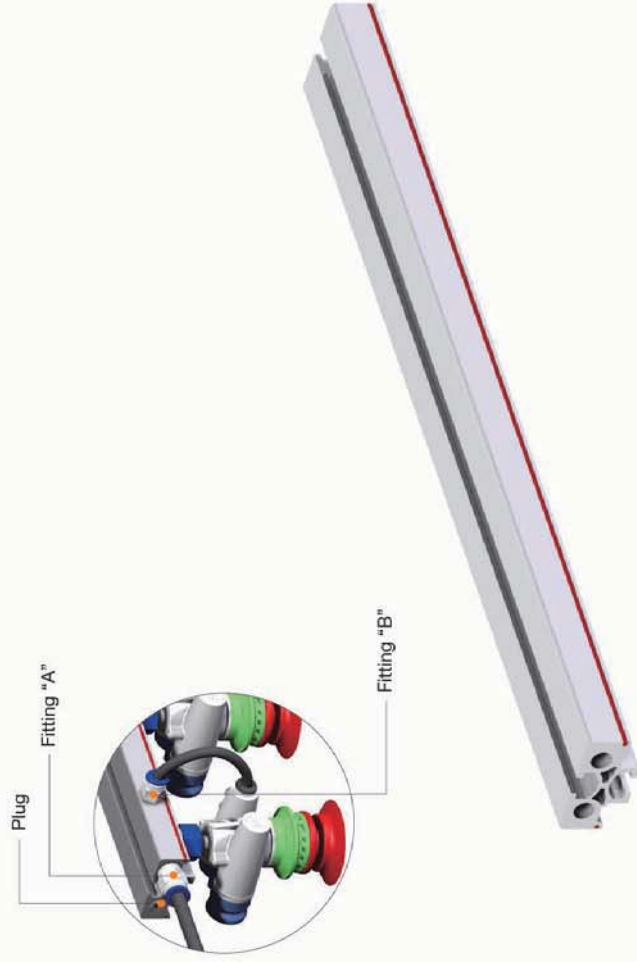
Product view	Model	Description
	FIM504	M5 thread, 40 one touch fitting
	FLM50	M5 thread, 40 one touch fitting



[Unit : mm]

Model	A	B
FIM504	4	22
FLM504	4	16.8

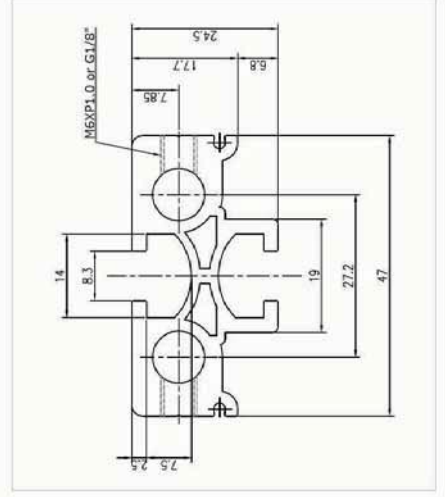
Profile – T08 series



Profile

Model	Description
T08 – 500	Profile length 0.5m
T08 – 1000	Profile length 1m
T08 – 1500	Profile length 1.5m
T08 – 2000	Profile length 2.0m

* Specific length of profile is required to contact VMECA.



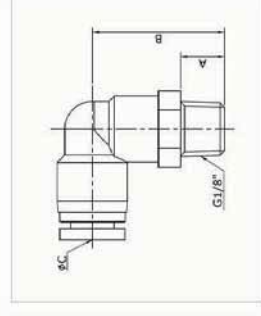
Dimensional Data

Plug

Product view	Model	Description
	HL8	Plug for profile

Fitting "A"

Product view	Model	Description
	F1806	G1/8 thread, 6Ø one touch fitting
	F1808	G1/8 thread, 8Ø one touch fitting
	FL1806	G1/8 thread, 6Ø one touch fitting
	FL1808	G1/8 thread, 8Ø one touch fitting

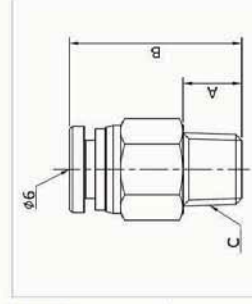


Model	A	B	C
F1808	8	28.5	8
F1810	8	31	10
FL1808	8	27	8
FL1810	8	32	10

[Unit : mm]

Fitting "B"

Product view	Model	Description
	FIM606	M6 thread, 6Ø one touch fitting
	F1806	G1/8 thread, 6Ø one touch fitting
	FLM606	M6 thread, 6Ø one touch fitting
	FL1806	G1/8 thread, 6Ø one touch fitting



Model	A	B	C
FIM606	6.5	25.7	M6XP1.0
F1806	8	23.5	G1/8"
FLM606	6.5	23.5	M6XP1.0
FL1806	8	24	G1/8"

[Unit : mm]